

System W



ann idstein

# System W

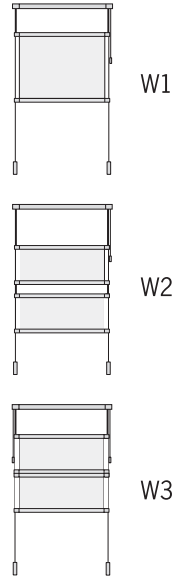
A timeless classic in the collection of Ann Idstein.

System W was created by Swiss designer Christophe Marchand. The idea behind the concept was to create an aesthetically light product, that functions as a fully adjustable, partial sun screen without covering more space than necessary in a window environment.

This flexible functionality and the minimalistic design is still representative for System W, 20 years after the first drafts were sketched up. System W is manufactured in the south of Sweden, using high quality textiles and fine aluminium components.

System W is offered in 3 cord control versions. The base type W1 is equipped with one textile element and one cord control. System W2 controls two textile elements with one cord control. Finally, System W3 has two textile elements that are controlled individually with two separate cord controls.

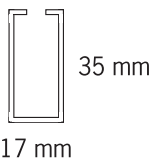
Types W1 and W2 are also available in a motorized version.



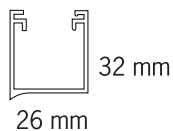
System W1



Cross section  
Cord control headrail



Cross section  
Motorized headrail



Stainless steel wires offer increased stability. Weights are attached at the bottom of the wires. Various types of weights are available.

The textile elements are suspended from strips, that are attached to small aluminium parts at the ends. The strips can be visible or hidden inside a sewn hem as shown here.



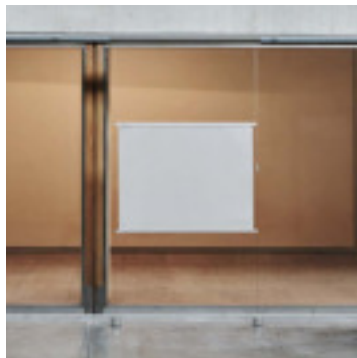


Three System W 1 elements.



By fitting System W in a trackrail, it can be slid sideways.





System W can be adjusted in both vertical- and horizontal direction. This flexible movement in combination with a wide selection of fabrics, offers endless configurations for your window.

